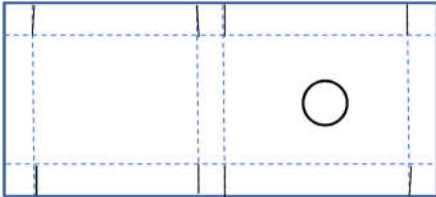


Honey Bear Pizza Box

Honeycomb color: Crushed Curry

Bear: Soft Suede



Start with cardstock 4 ½" x 8 ¼".

Score at ¾" on all 4 sides
and then at 3 ¾" and 4 ½" along the length.

On both long edges, cut on the score line to the next score line, making 6 tabs. (short black lines on pic.)

1. Cut circle out of center of one of the end panels with a circle thinlit. (I used smallest from the Layering Circles set.)
2. Stamp bees on the backside of the circle end panel near the circle.
3. Crease well on all score lines.
4. Line up the hexagon embossing folder edge with one of the center score lines and run through the Big Shot.
5. Put Tear & Tape Adhesive on the front side of all 6 tabs.
6. Remove all the backing of the Tape.
7. Tuck/adhere 2 tabs on the circle end to the sides.
8. Tuck/adhere the other 4 tabs to the sides of the non-circle end to make the box bottom.
9. Stamp the bear and run thru the Big Shot with the thinlit.
10. Trim off the tag hole.
11. Close the bear front & back and adhere with Tear & Tape.
12. Apply Tear & Tape to the front of the bear any/everywhere but his face.
13. Remove the backing and adhere to the box so just the face is peeking through the window.

